

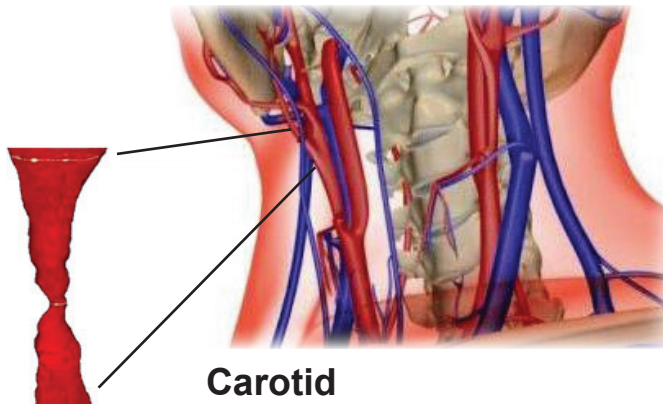


**visualize**  
VASCULAR

**AV Fistula**



## **Advanced Luminal 3D Visualization**



**Carotid**

**Lower Arterial**



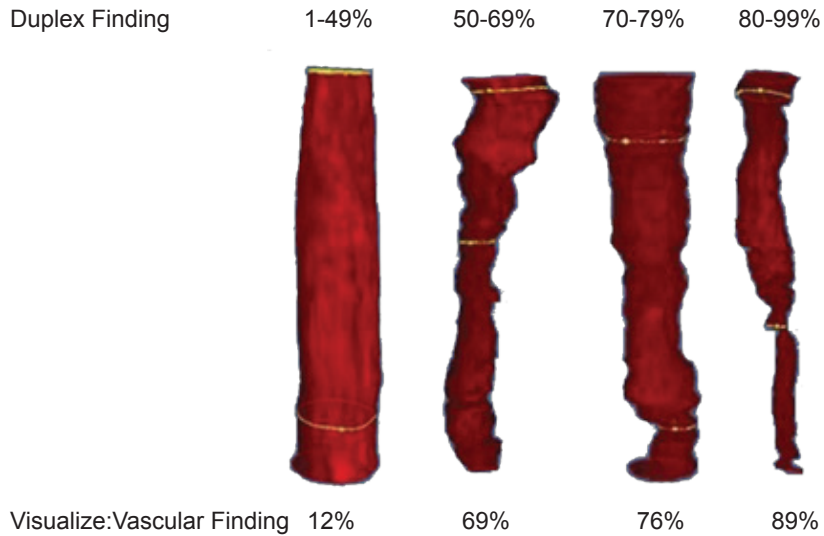
**Visualize:Vascular™ 3D rendering software provides greater diagnostic capabilities than conventional 2D ultrasound alone. Visualize works with ultrasound to provide detailed luminal evidence to help pinpoint those patients who would benefit from further treatment.**

- Transforms 2D ultrasound into 3D renderings of the true lumen
- Effectively calculates luminal reduction
- Correlates well with MRA\*
- Capture a new revenue stream with a well-established CPT code 76377
- Optimize patient treatment planning

---

\*Gurell et.al. SRU 2012. Comparison of 3D Luminal Ultrasound Visualization to Carotid Duplex Exam (CDE) and Magnetic Resonance Angiography (MRA) for Evaluation of Carotid Stenosis. "Visualize:Vascular significantly improves diagnostic capability of Duplex Ultrasound with results matching those of MRA."

# Comparison of Luminal Reduction in the ICA



**Visualize automatically identifies the min and max diameters, shown in yellow, to calculate luminal reduction. The diameters are found by viewing each slice 360 degrees around the center of the artery following the NASCET method.**



Min: 1.4 mm

Max: 5.7 mm

Visualize data reveals the patient has 85% Luminal Reduction which is defined as Critical Stenosis using the NASCET criteria.

**Visualize can be performed on patients presenting with an abnormality such as:**

- Presence of plaque
- Tortuosity
- Turbulent Flow / High Velocity
- Follow-up to a surgical procedure

---

**Learn More | [www.PenVasc.com](http://www.PenVasc.com) | [visualize@penvasc.com](mailto:visualize@penvasc.com) | 763.475.3388**